

R2CA18450HXROOM (R2CA18450HCROOM)

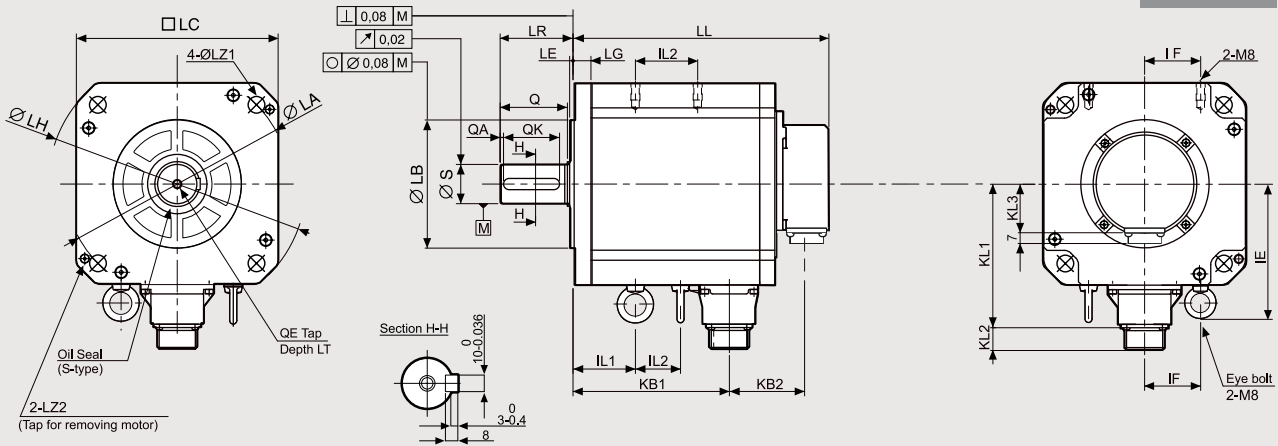
SANYO DENKI
SANMOTION

Dimensions (Unit:mm)

RTA[®] US



400
VAC

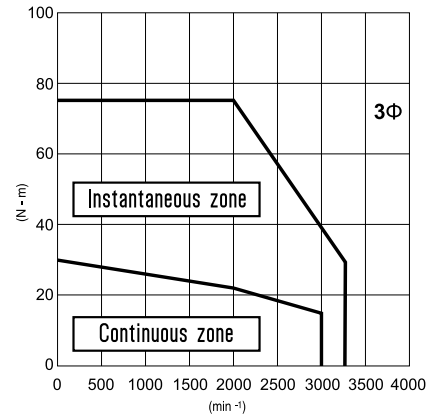


without brake LL	with brake LL	KB2	KB2	KL1	KL2	KL3	LG	LA	LB	LE	LH	LC	LZ1	LZ2	LR	S	Q	QA	QK	IL1	IL2	IF	IE	KB1	QE	LT
176	52	223	99	123	21	38	16	200	0 Ø114.3-0.035	3	Ø230	□180	Ø13.5	M8	65	0 Ø35-0.016	60	3	50	57	20	50	123	109	M8	25

FEATURES

MODEL	R2CA18450HXROOM (R2CA18450HCROOM)	
NOMINAL POWER	(W)	4500
NOMINAL SPEED	(rpm)	2000
MAXIMUM SPEED	(rpm)	3500
NOMINAL TORQUE	(Nm)	21.5
STALL TORQUE	(Nm)	30
MAXIMUM TORQUE	(Nm)	75.0
INERTIA	(Kg·m ²)	50×10 ⁻⁴
BATTERY-LESS ABSOLUTE ENCODER	(imp./rev)	SINGLE TURN: 131072 imp/rev (17 bit) MULTI TURN: 65536 turns (16 bit)
PROTECTION DEGREE		IP65
WEIGHT	(Kg)	20 [24]

TORQUE CURVE R2CA18450HX [4.5kW] + RS3C10



R.T.A. s.r.l. PAVIA (ITALY) SANYO DENKI CO., Ltd (JAPAN)

WITHOUT BRAKE



Indicated performances refer to motor controlled by related RS3 standard and EtherCat amplifiers.

3Φ = torque curve with three-phase power supply

WITH BRAKE



Suggested amplifiers: RS3C10A0AA2, RS3C10A2HA4



R.T.A. s.r.l.
Via E. Mattei - Fraz- Divisa
27020 Marcignago (PV) (Italy)
T +39.0382.929.855
F +39.0382.929.150
www.rta.it

R.T.A. Deutschland GmbH
Bublitzer Strasse 34, 40599
Duesseldorf (Germany)
T +49.211.749.668.60
F +49.211.749.668.66
www.rta-deutschland.de

R.T.A. IBERICA
C/Generalitat 22, Local 1
08850 Gava - Barcelona (Spain)
T +34 936.388.805
F +34 936.334.595
www.rta-iberica.es

R.T.A. INDIA Pvt
Teerth Business Center 3rd Floor, Unit No. 7,
Block EL-15, MIDC Bhosari Pimpri-Chinchwd,
Pune 411026 (India)
Tel. +91 9422507445
www.rta-india.in