

# SG-P11-090-010-12-R2-0400-00000

## PLANETARY GEARBOXES

SG 090

$i=010$

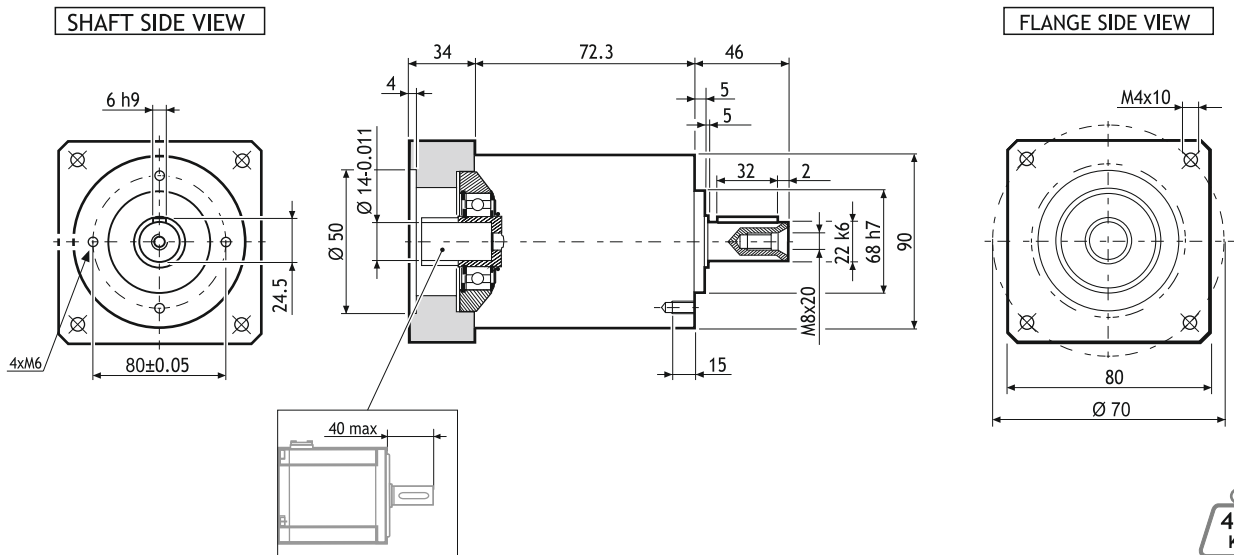
$\Phi=12'$

MADE IN ITALY

IP64

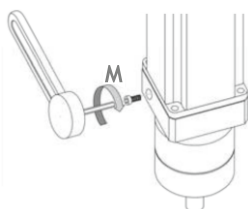


## Dimensions (Units:mm)



MODEL	Rated output torque [Nm]	Maximum acceleration output torque [Nm]	Emergency step output torque [Nm]	Backlash [arcmin]	Nominal input speed [min <sup>-1</sup> ]	Maximum momentary input speed [min <sup>-1</sup> ]	Torsional stiffness [Nm/arcmin]	Maximum radial force applying on output shaft [N]	Maximum axial force applying on output shaft [N]	Gear efficiency [%]	Gear moment of inertia [Kg <sup>m</sup> ²]
SG-P11-090-010-12-R2-0400-00000	37	70	150	12'	4000	6000	9	2200	1900	97	0.35x10 <sup>-4</sup>

## Suggested motors



R2AA06040 SERIES



MOUNTING OPERATION MODE: ■ Tightening torque M=11 Nm ■ Locking bolt M6 ■ R.T.A. Quality Control