

# SG-P11-090-025-15-R2-0X00-00000



PLANETARY GEARBOXES

SG 090

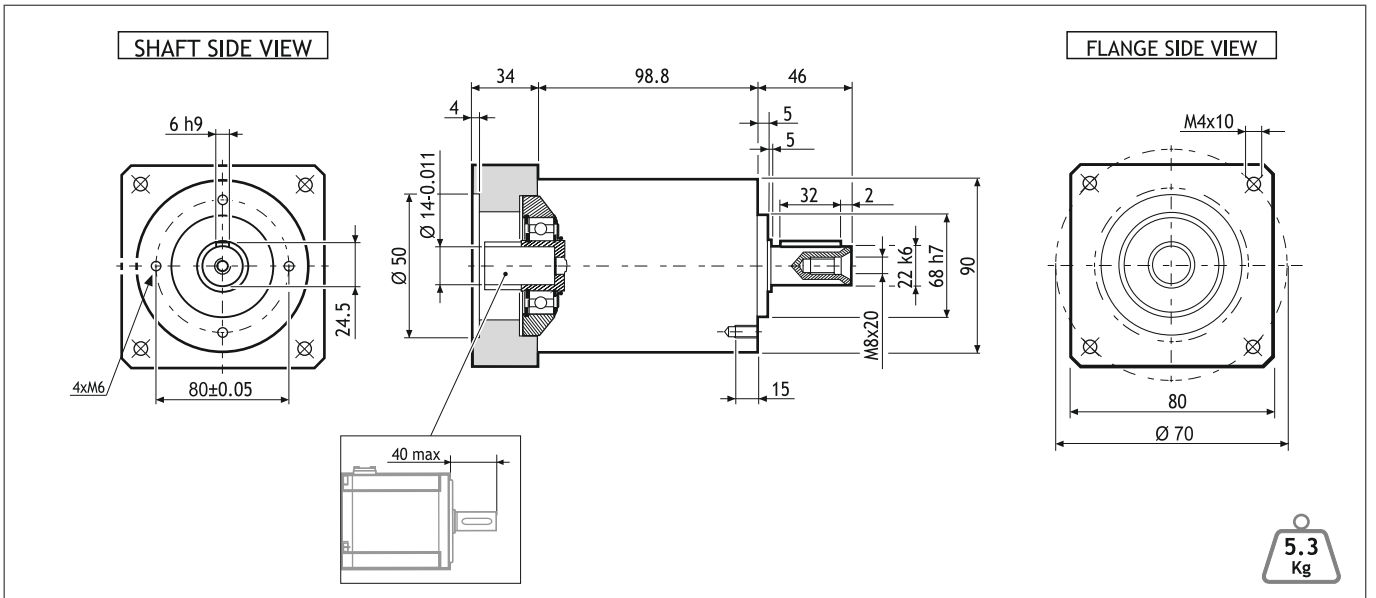
$i=025$

$\varphi=15'$

MADE IN ITALY

IP64

## Dimensions (Units:mm)



MODEL	Rated output torque [Nm]	Maximum acceleration output torque [Nm]	Emergency step output torque [Nm]	Backlash [arcmin]	Nominal input speed [min <sup>-1</sup> ]	Maximum momentary input speed [min <sup>-1</sup> ]	Torsional stiffness [Nm/arcmin]	Maximum radial force applying on output shaft [N]	Maximum axial force applying on output shaft [N]	Gear efficiency [%]	Gear moment of inertia [Kgm <sup>2</sup> ]
SG-P11-090-025-15-R2-0X00-00000	43	80	160	15'	3200	4500	8.5	2200	1900	94	0.40x10 <sup>-4</sup>

## Suggested motors

	<b>R2AA06020 SERIES</b> 	<b>R2AA06040 SERIES</b> 
<b>MOUNTING OPERATION MODE:</b> ■ Tightening torque M=11 Nm ■ Locking bolt M6 ■ R.T.A. Quality Control		



R.T.A. s.r.l.  
Via E. Mattei - Fraz- Divisa  
27020 Marcignago (PV) (Italy)  
T +39.0382.929.855  
F +39.0382.929.150  
www.rta.it

R.T.A. Deutschland GmbH  
Bublitzer Strasse 34, 40599  
Duesseldorf (Germany)  
T +49.211.749.668.60  
F +49.211.749.668.66  
www.rta-deutschland.de

R.T.A. IBERICA  
C/Generalitat 22, Local 1  
08850 Gava - Barcelona (Spain)  
T +34 936.388.805  
F +34 936.334.595  
www.rta-iberica.es

R.T.A. INDIA Pvt  
Teerth Business Center 3<sup>rd</sup> Floor, Unit No. 7,  
Block EL-15, MIDC Bhosari Pimpri-Chinchwad,  
Pune 411026 (India)  
Tel. +91 9422507445  
www.rta-india.in